

From: [Glenda Kurten](#)
To: [David Lunt](#); [Cookie Sparrow](#); [William Dugas](#); [Ari Michelsen](#); [Bobby Eddleman](#); [Charles Long](#); [Don Robinson](#); [Frank Gilstrap](#); [Jose M Amador](#); [John Sweeten](#); [Bill Holloway](#); [John Walker](#); [Tim Davis](#)
Cc: [Anna J Fox](#); [David Baltensperger](#); [Deborah Sutherland](#); [Kathy Ferguson](#); [Kristen Richardson](#); [Li Zhang](#); [Lea Dell Morris](#); [Monica E Gonzales](#); [Mollie Honnas](#); [Monika L Morales](#); [Pam Wilhelm](#); [Susie Mendez](#); [Stacy Ferrell](#); [Scott Vajdak](#); [Vickie Marriott](#); [Yolanda C Goynes](#); [Barbara Bracken](#); [Betty Yezak](#); [Glenda Kurten](#); [Karen Dean](#); [Kevin Moore](#); [Linda Francis](#); [Lindra Blum](#); [Mildred E Brandt](#); [Mika Wyatt](#); [Pamela Littlejohn](#); [Roberta Harris](#); [Sonnie Feagley](#); [Sandra Welch](#); [Tami Hons](#)
Subject: Soil & Crop Sciences Mixer in Pittsburgh, PA
Date: Thursday, October 15, 2009 11:21:35 AM
Attachments: [09.Mixer Flyer.pdf](#)
[09.Mixer Shirt-Pocket Cards.pdf](#)

As is our custom Soil & Crop Sciences will hold it's annual mixer in conjunction with the 2009 International ASA-CSSA-SSSA Annual Meetings in Pittsburgh, PA.

The mixer will be held at August Henry's City Saloon, 946 Penn Ave, Pittsburg, PA on Tuesday, Nov 3, 2009 at 5:30 - 7:30 p.m. We hope that those attending the meetings will join us. All students, staff, faculty, and friends of the department are welcome. Help us get the word out to former students and faculty, and anyone else you think might enjoy the fellowship.

If you would like to have copies of flyers or the pocket size cards that we print up each year please let Kathy Ferguson know. She is printing the cards in sets of 10, so let her know how many sets you would like so she can get them printed for you to pick up in 217 Heep. I am attaching a flyer and a sheet of pocket size cards that you can print out and distribute if you wish.

Thanks,
Glenda

Glenda Kurten
Business Coordinator II - Instruction
Soil and Crop Sciences &
MEPS Program
979/845-3342
Fax: 979/458-0533
E-mail g-kurten@tamu.edu

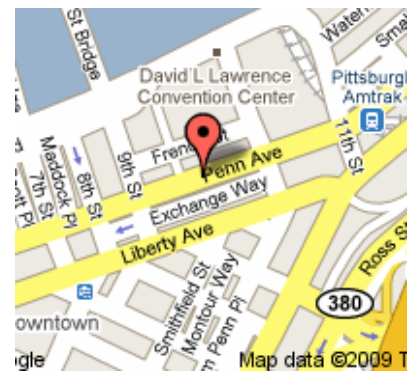
TAMU SOIL & CROP SCIENCES MIXER

The Faculty and Staff of
Texas A & M University
Department of Soil & Crop Sciences
invite you to join in food, fun, and fellowship

On

Tuesday, November 3, 2009

5:30 - 7:30 p.m.



August Henry's City Saloon
946 Penn Ave, Pittsburg, PA

Everyone is welcome!

Soil & Crop Sciences Mixer



August Henry's
City Saloon
946 Penn Avenue
Pittsburgh, PA

Tuesday, Nov. 3, 2009
5:30 pm – 7:30 pm

Everyone is welcome!

Soil & Crop Sciences Mixer



August Henry's
City Saloon
946 Penn Avenue
Pittsburgh, PA

Tuesday, Nov. 3, 2009
5:30 pm – 7:30 pm

Everyone is welcome!

Soil & Crop Sciences Mixer



August Henry's
City Saloon
946 Penn Avenue
Pittsburgh, PA

Tuesday, Nov. 3, 2009
5:30 pm – 7:30 pm

Everyone is welcome!

Soil & Crop Sciences Mixer



August Henry's
City Saloon
946 Penn Avenue
Pittsburgh, PA

Tuesday, Nov. 3, 2009
5:30 pm – 7:30 pm

Everyone is welcome!

Soil & Crop Sciences Mixer



August Henry's
City Saloon
946 Penn Avenue
Pittsburgh, PA

Tuesday, Nov. 3, 2009
5:30 pm – 7:30 pm

Everyone is welcome!

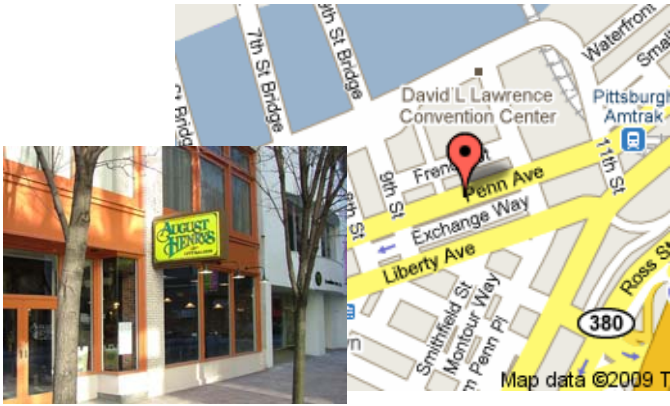
Soil & Crop Sciences Mixer



August Henry's
City Saloon
946 Penn Avenue
Pittsburgh, PA

Tuesday, Nov. 3, 2009
5:30 pm – 7:30 pm

Everyone is welcome!



August Henry's City Saloon is located directly across Penn Avenue from David L. Lawrence Convention Center



August Henry's City Saloon is located directly across Penn Avenue from David L. Lawrence Convention Center



August Henry's City Saloon is located directly across Penn Avenue from David L. Lawrence Convention Center



August Henry's City Saloon is located directly across Penn Avenue from David L. Lawrence Convention Center



August Henry's City Saloon is located directly across Penn Avenue from David L. Lawrence Convention Center



August Henry's City Saloon is located directly across Penn Avenue from David L. Lawrence Convention Center